

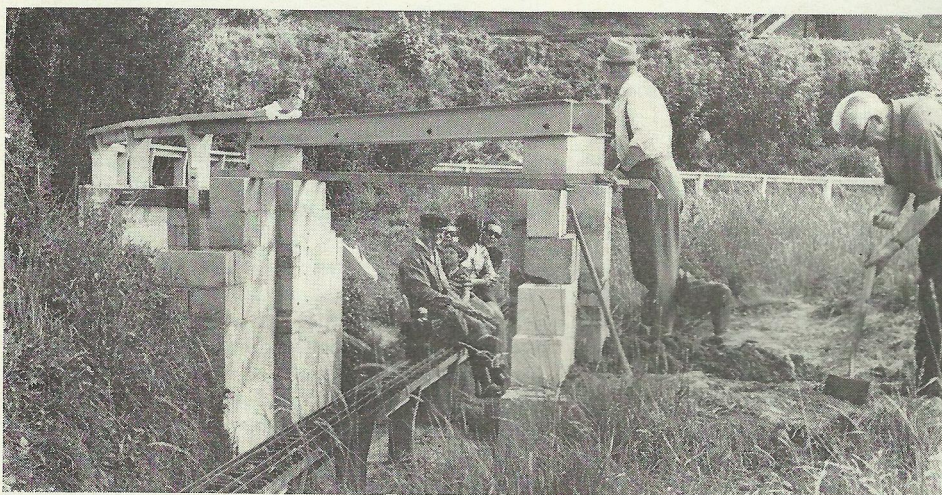
# TRACK EXTENSIONS AT MALDEN

by George W. Chaplin

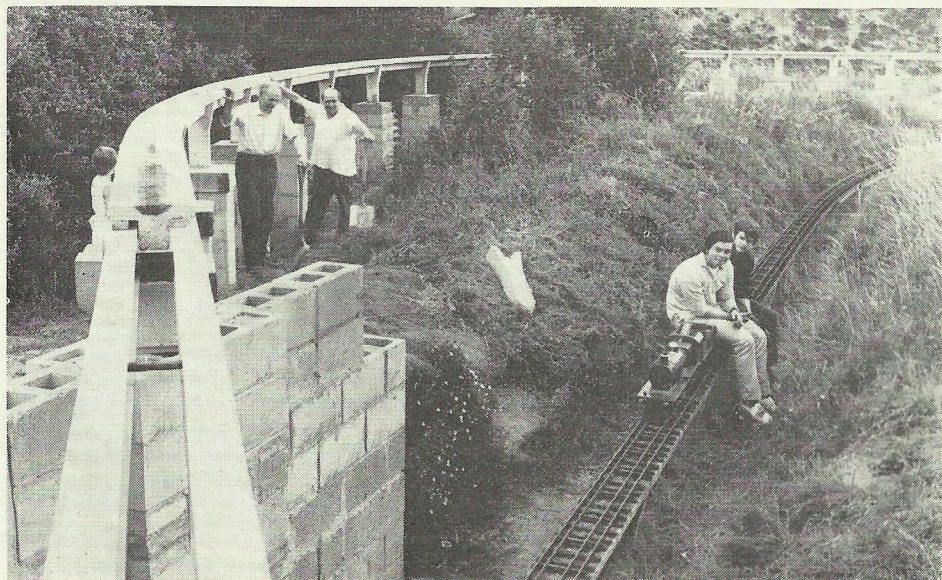
THE RAILWAY MANIA is still with us! Apart from a fury of fund-raising by the preservation societies, there are new stretches of trackwork snaking their way across model engineering societies' land all over the south. Bournemouth, Newport (St. Mellons), Beech Hurst and North London are all busy, and you can't see Harlington for concrete.

We at the Malden & District SME have not been letting the grass grow under our feet either. The

accompanying pictures show that steady progress is being made on the second circuit of the raised track at Thames Ditton. This second "aerial" loop consists of about 100 ft. of level track, and a 700 ft. long viaduct which climbs at 1 in 120 for about 400 ft. until the rail level is 6 ft. from the ground. A steel girder bridge takes the track over the first "low" loop. The track then descends on a reverse curve at 1 in 80 down to the normal track level, where the two circuits will be joined.

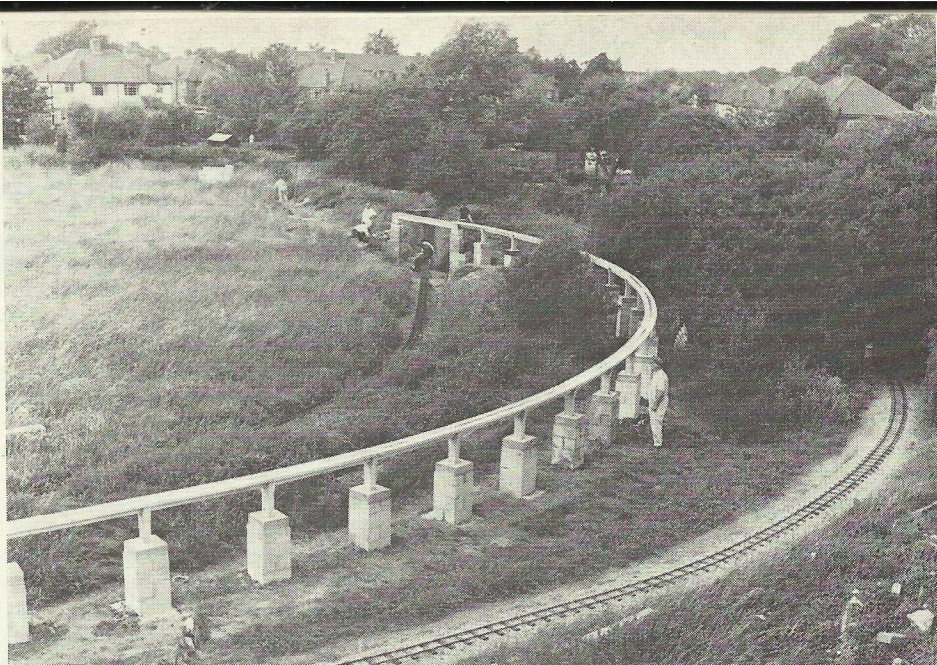


*Work in progress at Malden: Building the bridge over the old  $2\frac{1}{2}/3\frac{1}{2}/5$  in. track.*

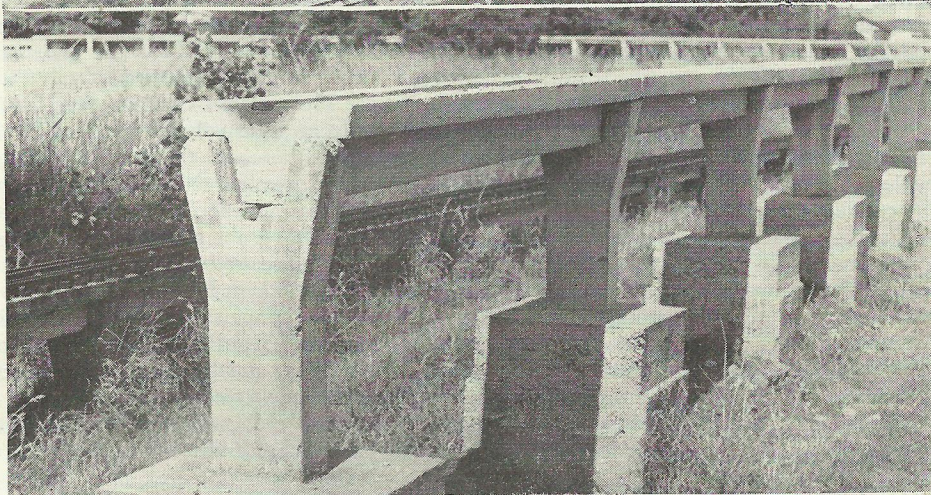


*This view shows the great height of some of the new track.*

*The shape of things to come. The upper and lower loops. Ground-level track on right.*



*This picture shows the concrete beam construction being adopted. Bottom picture shows the 7½ in. gauge track on right.*



*Continued on page 983*

